

*In Town and
Country*

Simply Serenbe

Written by: Jessica Vaquera
Photography by: Ed Wolkis

Nan Haverty retreats to Serenbe



It has been an extraordinary year in real estate for Nan Haverty. She is excited to announce her move to Glennis Beacham and Company. Nan says, “I have always admired Glennis. She demonstrates the type of leadership I can trust and depend on. Her boutique firm dominates the Atlanta market. I am thrilled to be a part of her team.”

The hard-working mom credits her success to her supportive husband, loyal team and having wonderful clients who trust her ability to get the job done. She says she is blessed to have Sarah Pinson, also a licensed agent, as her executive assistant.

Real estate has been challenging. What do you do to relax?

“I put on my jeans and head to Serenbe, a farm to table community, located just 45 minutes outside of Atlanta. Serenbe is a place where my family can find downtime together.”

You’re a co-founder of Serenbe– what do you love most about the community?

“I love Serenbe’s architecture and rolling landscape, I see it as a canvas to paint and build extraordinary places, nurture relationships and respect nature.”

How involved are you with the real estate within Serenbe?

“Because this is my place to wind down, I refer clients to my good friend and Serenbe resident Sandra Storrar who is a licensed and seasoned broker. She embraces the Serenbe life daily.”

What are your children’s favorite things to do at Serenbe? “My children love the freedom and the independence that Serenbe offers. They enjoy riding their bikes, hiking, tennis and checking out the newborn animals at the inn. A real treat is enjoying a late night movie shown at the stables under the stars.”

Tell me about the restaurants at Serenbe? “Yes they are all wonderful with their own different ambience. I enjoy the Blue Eyed Daisy Bakeshop lattes in the morning and their great burgers for lunch. Naturally, my children love the sweets there. The Hil is such a great place to meet friends for cocktails and enjoy long gourmet dinners. The Farmhouse at The Inn is such a romantic place to have dinner and a night cap by the fireplace in the parlor.”

And the new spa and salon? “Yes I am so thrilled the Blue Med Spa has opened here. It really is a treat for me to be able to get facials and massages just a step away from my home. Paisley Salon has such a strong following, people drive from Atlanta to get their hair done! I spoil myself there having it washed and blown out before heading to dinner.”

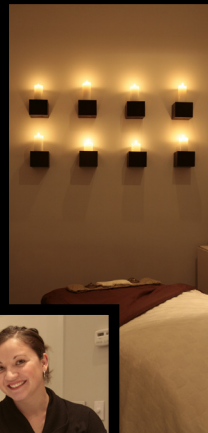
How about shopping? “Absolutely. The well-known Bilt-house, established in Atlanta, now has a boutique here. Goodes is a one of kind home store, carrying great linens, antiques and cool furniture.”

What kinds of galleries or artists exist there? “Art is part of Serenbe. We have Newington, StudioSwan and Jane Whitehurst art galleries. We always have great turnouts for special exhibits and new gallery openings. It is attracting people from all over the world.”

Is it hard to pack up and head to the city? “Yes it is. The kids and the dogs are reluctant to pack up. I remind them quickly that Serenbe summer camp is just around the corner and next weekend will be here before they know it.”

CONTINUED ON NEXT PAGE

Keeping it simple at Serenbe



Every home is a masterpiece

Jim Meathe and Shaba Derazi of YM Derazi Custom Homes, new friends of Serenbe and clients of Nan Haverty are considered to be the most sought after builders of luxury / exceptional homes in Atlanta and Private Eagle Island, Michigan. They now have their eye on Serenbe.

One of their beautiful homes featured here is in the heart of Buckhead. They are known for their attention to detail, selection of materials, many imported from Europe, and working closely with renowned architects such as Peter Block and Keith Summerour.

Nan states, "It is exciting to see builders of their caliber taking an interest in Serenbe. I am privileged to be working with both Jim and Shaba In Town and Country." 🍷